



# BOX NOW

# API Integration

Partner API

---

(Version: 1.65)

BOX NOW Bulgaria

The entire BOX NOW API documentation can be found on

[www.boxnow.bg/en/partner-api](http://www.boxnow.bg/en/partner-api)

## Contents:

Set up .....	3
Environments .....	4
Troubleshooting (Error Codes) .....	5
Requesting a Delivery (Process) .....	7
Authentication /auth-sessions .....	9
List all available origins /origins .....	10
List all available destinations /destinations .....	11
Request a delivery /delivery-requests.....	14
Modify your delivery request /delivery-requests/{id} .....	17
See all parcels /parcels .....	18
Fetch a shipping label /parcels/{id}/label.{type} .....	22
Destination Map (Widget/Custom).....	24
Widget Integration .....	24
Custom Map Integration.....	26
Nearby Lockers check with arcGis /api/v2/delivery-requests:checkAddressDelivery.....	27
Appendix (API Endpoints) .....	28
Authentication .....	28
Locations .....	28
Delivery Requests .....	32
Labels .....	43
Parcels .....	50
Webhook .....	56
Entrusted Partners .....	58

## 1. Set up

To use our API, you must first register your company with our technical team. To do that, reach out to us at [integrationsupport@boxnow.bg](mailto:integrationsupport@boxnow.bg) with the following information:

- **Company name, Address, Tax ID & Contact details (for customers).**  
Example: [demo@demo.bg](mailto:demo@demo.bg), phone number (e.g. +359 123 456 7890)
- **Phone numbers of users** that will have access to the Partner Portal system. We will use these numbers for 'One Time Password' (OTP) SMS authentications during login.
- **All addresses of pickup points** where we will be picking up your orders for delivery.  
Examples: Warehouses, Stores etc.

After you are successfully registered, you will receive from us the following:

### **OAUTH\_CLIENT\_ID**

Keep this value private and safe! This is your OAuth2 Client ID that you will use to authenticate with the Partner API.

### **OAUTH\_CLIENT\_SECRET**

Keep this value private and safe! This is your OAuth2 Client Secret that you will use to authenticate with the Partner API.

### **API\_URL**

This is your Base URL for the Partner API, to which you will then append the relevant endpoint paths.

## 2. Environments

### Stage (Sandbox)

An environment with limited functionalities, where you can test the integration.

### Production

Use this environment with **caution**, as it is **live** and connected to **real end-users**. BOX NOW is not responsible for incorrect requests in production.

### 3. Troubleshooting (Error Codes)

Description of all the error codes for 400 *Unprocessable entity responses*:

#### **Error Code P400**

**Invalid request data.** Make sure you are sending the request according to the documentation.

#### **Error Code P401**

**Invalid request origin location reference.** Make sure you are referencing a valid location ID from Origins endpoint or valid address.

#### **Error Code P402**

**Invalid request destination location reference.** Make sure you are referencing a valid location ID from Destinations endpoint or valid address.

#### **Error Code P403**

**You are not allowed to use AnyAPM-SameAPM delivery.** Contact support if you believe this is a mistake.

#### **Error Code P404**

**Invalid import CSV.** See error contents for additional info.

#### **Error Code P405**

**Invalid phone number.** Make sure you are sending the phone number in full international format, e.g. +359 xx xxx xxxx.

#### **Error Code C404**

**Invalid phone number.** Make sure you are sending the phone number in full international format, e.g. +359 xx xxx xxxx.

#### **Error Code P406**

**Invalid compartment/parcel size.** Make sure you are sending one of required sizes 1, 2 or 3 (Small, Medium or Large). Size is required when sending from AnyAPM directly.

#### **Error Code P407**

**Invalid country code.** Make sure you are sending country code in ISO 3166-1 alpha2 format, e.g. BG.

#### **Error Code P408**

**Invalid amountToBeCollected amount.** Make sure you are sending amount in the valid range of (0, 5000).

#### **Error Code P409**

**Invalid delivery partner reference.** Make sure you are referencing a valid delivery partner ID from Delivery partners endpoint.

#### **Error Code P410**

**Order number conflict.** You are trying to create a delivery request for order ID that has already been created. Choose another order ID.

#### **Error Code P411**

**You are not eligible to use Cash-on-delivery payment type.** Use another payment type or contact our support.

#### **Error Code P412**

**You are not allowed to create customer returns deliveries.** Contact support if you believe this is a mistake.

#### **Error Code P413**

**Invalid return location reference.** Make sure you are referencing a valid location warehouse ID from Origins endpoint or valid address.

#### **Error Code P415**

**You are not allowed to create delivery to home address.** Contact support if you believe this is a mistake.

#### **Error Code P416**

**You are not allowed to use COD payment for delivery to home address.** Contact support if you believe this is a mistake.

#### **Error Code P420**

**Parcel not ready for cancel.** You can cancel only **new**, **undelivered**, or parcels that are not **returned** or **lost**. Make sure parcel is in transit and try again.

#### **Error Code P421**

**Invalid parcel weight.** Make sure you are sending value between 0 and 1 000 000.

#### **Error Code P422**

**Address not found.** Try to call just with postal code and country.

#### **Error Code P423**

**Nearby locker not found.**

#### **Error Code P424**

**Invalid region format.** Please ensure the format includes a language code followed by a country code in ISO 3166-1 alpha-2 format, separated by a hyphen, e.g. el-GR, or region exists in context.

#### **Error Code P430**

**Parcel not ready for AnyAPM confirmation.** Parcel is probably already confirmed or being delivered. Contact support if you believe this is a mistake.

#### **Error Code P440**

**Ambiguous partner.** Your account is linked to multiple partners and is unclear on whose behalf you want to perform this action. Send X-PartnerID header with ID of the partner you want to manage. You can get list of available Partner IDs from /entrusted-partners endpoint.

#### **Error Code P441**

**Invalid X-PartnerID header.** Value you provided for X-PartnerID header is either invalid or references partner you don't have access to. Make sure you are sending ID from /entrustedpartners endpoint.

#### **Error Code P442**

**The query limit for this API has been exceeded.** Please reduce the size of your query (max allowed is 100).

Description of codes for *403 Forbidden responses*:

#### **Error Code X403**

**Account disabled.** Your account had been disabled, contact support.

#### **Error Code P414**

**Unauthorized parcel access.** You are trying to access information to parcel/s that don't belong to you. Make sure you are requesting information for parcels you have access to.

#### **Error Code P461**

**Invalid address (street).** Make sure it contains at most 100 characters.

#### **Error Code P462**

**Invalid city.** You are trying to access shipment information that does not belong to you.

#### **Error Code P464**

**Invalid postal code.** Make sure it contains at most 20 characters.

#### **Error Code P465**

The partner does not have access to check delivery addresses.

#### **Error Code P466**

You are not allowed to create a delivery request because your account has an overdue .

Description of codes for *503 Service Unavailable responses*:

#### **Error Code P600**

**Locker bridge communication failed.** There has been some error when communicating with the locker bridge. Try again later or contact support.

#### **Error Code P610**

**Geolocation API failed.** There has been some error when translating address to gps coordinates. Try again later or contact support.

If you are having troubles integrating our API into your online store based on the current documentation, reach out to us at [integrationsupport@boxnow.bg](mailto:integrationsupport@boxnow.bg)

## 4. Requesting a Delivery (Process)

Follow these steps to successfully request a delivery and perform other related actions:

### 4.1. Authentication */auth-sessions*

Authentication is based on OAuth 2.0 standard, [Client Credentials grant](#) (you can find more information by clicking on the link).

In order to use the API, you **must attach the access token to Authorization header as a Bearer token.**

See an example of a successful integration:

#### POST */api/v1/auth-sessions*

```
{
  "grant_type": "client_credentials",
  "client_id": "string",
  "client_secret": "string"
}
```

#### Status Code 200

```
{
  "access_token": "client_credentials",
  "token_type": "Bearer",
  "expires_in": 3600
}
```

Response:

```
{
  "code": "string",
  "message": "string"
}
```

- code – error code
- message – error description

Error Code	Description
400	Bad Request. The server cannot or will not process the request due to something that is perceived to be your error (e.g., malformed request syntax, invalid request message). You are to modify the request before sending it again.
401	Not Authorized. You are either using an expired Access token to access the data or trying to initialize Auth session with invalid data.
403	Account disabled. Your account had been disabled, contact support.

#### 4.2. List all available origins */origins*

This call will list all available **pick-up point** (PUP) locations where BOX NOW can pick up all your parcels from – typically your warehouses.

You can list all your warehouses using */origins* API call, which has the same parameters as */destinations* API call where you do not specify parameters **latlng**, **radius** or **requiredSize**, but you specify **locationType** as “*warehouse*”. You refer to this location by its ID (locationId).

Moreover there is one specific location called *any-apm* that can be listed by the same way and using *locationType* as “*any-apm*”, it returns just one location – *any-apm*. You can refer to it by its ID (locationId). Usage of this will be explained in the next section.

Below is the parameter available for you to filter all Origin locations:

Successful example of filtering Origin locations:

Name	Type	Description
latlng	String	If set, returns only locations within the specified radius around these GPS coordinates.
radius	Number	Radius in meters within which to return locations around the provided GPS coordinates. Ignored if latlng is not provided.  Default: <b>25000</b>
requiredSize	array[string]	Returns only locations of the specified types. If missing, the filter is not applied. Allowed values: <b>apm, any-apm, warehouse, depot</b>
locationType	string	Return only locations with given a type. If not present, filter is not applied.  ☐ Available values: any-apm, warehouse

See an example of a successful integration:

## GET /api/v1/origins

```
curl -X 'GET' \  
'.../origins \  
-H 'accept: application/json'
```

## Status Code 200

```
{  
  "data": [  
    {  
      "id": "string",  
      "type": "warehouse",  
      "image": "https://via.placeholder.com/175",  
      "lat": "48.940819584637266",  
      "lng": "12.366962491028423",  
      "region": "string",  
      "title": "Warehouse 1",  
      "name": "Main Warehouse",  
      "addressLine1": "Vasil Levski 155",  
      "addressLine2": "Sofia",  
      "postalCode": "14661",  
      "country": "BG",  
      "note": "Намира се до ъгъла на супермаркета" //can be null  
    }  
  ]  
}
```

Further responses, which might occur:

Error Code	Description
400	Bad Request. The server cannot or will not process the request due to something that is perceived to be your error (e.g., malformed request syntax, invalid request message). You are to modify the request before sending it again.
401	Not Authorized. You are either using an expired Access token to access the data or trying to initialize Auth session with invalid data.
403	Account disabled. Your account had been disabled, contact support.

### 4.3. List all available destinations */destinations*

This call will list all available APM (Automatic Parcel Machine) locations (lockers) where we can deliver your parcel to.

#### Important:

The maximum allowed parcel dimensions for shipments via BOX NOW must not exceed the size of the largest box: (H: 36 cm, W: 45 cm, D: 60 cm) with a maximum weight of 20 kg. Parcels that exceed these limits (dimensions and/or weight) cannot be processed or shipped via the BOX NOW service.

It is recommended to implement filtering of shipping methods so that BOX NOW is not available for orders with products that do not meet these requirements.

Below are the parameters available for you to filter all APM locations:

Name	Type	Description
latlng	string	If applied, only locations in the specified radius from these gps coordinates are returned.  □ Example: 48.78081955454138,12.446962472 273063
radius	number	Radius in meters to return only locations within a selected radius from given GPS location. Ignored if latlng is not present. <ul style="list-style-type: none"><li>• Example: 1000</li><li>• Default value: 25000</li></ul>
requiredSize	number	Return only locations that can accept a package of your requiredSize. <ul style="list-style-type: none"><li>• Example: 1</li><li>• 1 - Small (H: 8 cm, W: 45 cm, L: 60 cm), 2 - Medium (H: 17 cm, W: 45 cm, L: 60 cm), 3 - Large (H: 36 cm, W: 45 cm, L: 60 cm)</li></ul>
locationType	string	Return only locations with given a type. If not present, filter is not applied.  □ Available values: apm, any-apm
limit	number	Limit the number of returned results. If not defined, all results are returned.

See an example of a successful integration:

### GET /api/v1/destinations

```
curl -X 'GET' \  
'.../destinations \  
-H 'accept: application/json'
```

### Status Code 200

```
{  
  "data": [  
    {  
      "id": "string",  
      "type": "apm",  
      "image": "https://via.placeholder.com/150",  
      "lat": "48.78081955454138",  
      "lng": "12.446962472273063",  
      "title": "ПЕТЪР ИВАНОВ",  
      "name": "ПЕТЪР ИВАНОВ",  
      "addressLine1": "Ул. Васил Левски 1",  
      "addressLine2": "string",  
      "postalCode": "15121",  
      "country": "BG",  
      "note": "Намира се зад зоомагазина",  
      "expectedDeliveryTime": "<dateTime>"  
    }  
  ]  
}
```

Alternatively, refer to **section 4** for a JavaScript snippet you can embed into your web to display all available APMS via a pop-up / iframe widget, or for a brief description of a successful custom map integration.

### id

When requesting a delivery, you will refer to these records by **id** – More commonly: **locationId**

Further responses, which might occur:

Error Code	Description
------------	-------------

400	Bad Request. The server cannot or will not process the request due to something that is perceived to be your error (e.g., malformed request syntax, invalid request message). You are to modify the request before sending it again.
401	Not Authorized. You are either using an expired Access token to access the data or trying to initialize Auth session with invalid data.
403	Account disabled. Your account had been disabled, contact support.

4.3.1 For better performance with this specific call, use the following API URLs instead of the ones that come with your credentials:

**Sandbox/Stage:** [https://locationapi-stage.boxnow.bg/v1/apms\\_bq-BG.json](https://locationapi-stage.boxnow.bg/v1/apms_bq-BG.json)

**Production:** [https://locationapi-production.boxnow.bg/v1/apms\\_bq-BG.json](https://locationapi-production.boxnow.bg/v1/apms_bq-BG.json)

For a list with better performance of our locations, you can use the following endpoint, which, similar to <https://widget-v5.boxnow.bg/devs>, updates dynamically.

#### 4.4. Request a delivery */delivery-requests*

Use this call to order a delivery of a parcel (or multiple parcels).

This is the main call you will be using to create any type of delivery requests.

Once a **successful request** for delivery is made:

- (optional) We will send you an email notifying you of a **successful delivery request creation** with a PDF label attached. Parameter `notifyOnAccepted` needs to be populated for this function (See **Appendix 7.0**).
- (Described below) Alternatively, you should fetch the PDF label for each parcel using the GET ***/parcels/{id}/label.pdf*** call, print it and stick it to the parcel(s).
- We will send a courier to pick up the parcel(s) at the agreed pick-up times.
- We will also notify the customer that:
  1. we have received a delivery order and that a parcel will be delivered to them.
  2. we have successfully delivered their parcel(s) to the specified destination APM, with the necessary details for collecting the parcel(s).

See an example of a successful integration:

### POST /api/v1/delivery-requests

```
{
  "orderNumber": "string",
  "invoiceValue": "25.50",
  "paymentMode": "prepaid",
  "amountToBeCollected": "0.00",
  "allowReturn": true,
  "origin": {
    "contactNumber": "+359 8 1 234 1234",
    "contactEmail": "partner.example@boxnow.bg",
    "contactName": "Petar Ivanov",
    "locationId": "string"
  },
  "destination": {
    "contactNumber": "+359 123 456 7890",
    "contactEmail": "customer.example@boxnow.bg",
    "contactName": "Petar Ivanov",
    "locationId": "string"
  },
  "items": [
    {
      "id": "string",
      "name": "Smartphone",
      "value": "3.45",
      "weight": 0
    }
  ]
}
```

#### items: weight

If the parcel weight is unknown, pass **1**.

These parameters are the main identifiers of pick up & delivery locations:

#### origin : locationId

The warehouse where the parcel will be picked up from.

#### destination : locationId

Automatic Parcel Machine (APM) or locker where the parcel will be delivered to

Also, do not forget to pass us the following personal details with each delivery request.

- **Sender:**
  - Name.
- **Recipient:**
  - Name;
  - Phone number;
  - Email.

### Status Code 200

```
{
  "referenceNumber": "string",
  "parcels": [
    {
      "id": "string"
    }
  ]
}
```

Note: In the above example, the “items” correspond to parcels, but item ID is eShop unique ID (reference number, if you will). If you do not have unique ID of each item then create it by order number combined with sequential item number or any other way. While **parcel ID** (`parcels: id`) is BOX NOW internal unique ID used further to refer to the parcel.

For sending from APM you can use origin “any-APM” and destination specific APM

For delivering to APM where customer will pick up from the same APM you can use both origin and destination location any-APM.

Further responses, which might occur:

Error Code	Description
400	Bad Request. The server cannot or will not process the request due to something that is perceived to be your error (e.g., malformed request syntax, invalid request message). You are to modify the request before sending it again.
401	Not Authorized. You are either using an expired Access token to access the data or trying to initialize Auth session with invalid data.
403	Account disabled. Your account had been disabled, contact support.

#### 4.5 Modify your delivery request */delivery-requests/{id}*

After a delivery request is created, you can modify only the “**allowReturn**” parameter of the request by calling the PUT method.

Only this parameter is available to you:

Name	Type	Description
orderNumber	string	Unique order reference number you have used to create the delivery request.

See an example of a successful integration:

**PUT /api/v1/delivery-requests/{id}**

```
curl -X 'PUT' \
'.../delivery-requests/{id}' \
-H 'accept: application/json' \
-H 'Content-Type: application/json' \
-d '{"allowReturn": true
}'
```

## Status Code 200

```
{  
  "referenceNumber": "string"  
}
```

Further responses, which might occur:

Error Code	Description
400	Bad Request. The server cannot or will not process the request due to something that is perceived to be your error (e.g., malformed request syntax, invalid request message). You are to modify the request before sending it again.
401	Not Authorized. You are either using an expired Access token to access the data or trying to initialize Auth session with invalid data.
403	Account disabled. Your account had been disabled, contact support.

### 4.6 See all parcels */parcels*

Use this call to list parcel information related to your delivery requests.

These parameters are available to you:

Name	Type	Description
q	string	Search in: Order ID, Parcel ID, Customer name, Customer email, Customer phone number. Allowed only for partner portal users.  □ Example: q
limit	number	Number of entries per page: <ul style="list-style-type: none"><li>• Example: 15</li><li>• Default value: 50</li></ul>

orderNumber	string	Return only parcels related to this order number.
parcelId	string	ID of the parcel in our system. Return only parcel(s) with this ID.
paymentMode	string	<i>Available values:</i> prepaid, cod (CashOnDelivery) ☐ Default value: prepaid
paymentState	string	<i>Available values:</i> pending, paid-by- customer, transferred-to-partner Requires “cod” as paymentMode. If not present, filter is not applied
state*	string	<i>Available values:</i> new, in-transit, expired- return, returned, final-destination, delivered, lost, canceled, missing – described below.
pageToken	string	Set this token to return records for given page. You get this for each response.

\*Note: The aforementioned “state” parameter refers to the status of a parcel in a given timeframe.

Following are the definitions of each parcel type event (state):

- **new** – Parcel has been registered in the system;
- **delivered** – Parcel has been delivered;
- **returned** – Parcel has been returned to the sender;
- **in-transit** – Parcel is being transferred to a specific location;
- **in-depot** – Parcel is in one of our warehouses;
- **final-destination** – Parcel has reached its final destination, waiting for pickup;
- **cancelled** – Parcel order had been cancelled by the sender;
- **cancelled-return** – return of parcel, cancelled by sender;
- **wait-for-load** – Parcel is waiting in a specific APM to be taken over by BOX NOW courier for either to be returned to the sender or transferred to another APM;

See an example of a successful integration:

### GET /api/v1/parcels

```
curl -X 'GET' \  
'.../parcels\  
-H 'accept: application/json'
```

### Status Code 200

```
{  
  "pagination": {  
    "first": "string",  
    "last": "string",  
    "next": "string",  
    "prev": "string"  
  },  
  "count": 0,  
  "data": [  
    {  
      "id": "string",  
      "state": "new",  
      "name": "Smartphone",  
      "value": "4.56",  
      "weight": "1.6",  
      "compartmentSize": 0,  
      "originDeliveryRefId": "string",  
      "destinationDeliveryRefId": "string",  
      "itemRefId": "string",  
      "allowReturn": true,  
      "deliveryRequest": {  
        "typeOfService": "same-day",  
        "description": "string",  
        "orderNumber": "string",  
        "invoiceValue": "25.50",  
        "paymentMode": "prepaid",  
        "amountToBeCollected": "25.50",  
        "allowReturn": false,  
        "notifyOnAccepted": "partner@example.com",  
        "notifySMSOnAccepted": "+359 123 456 7890",  
        "origin": {  
          "contactNumber": "+359 123 456 7890",  
          "contactEmail": "string",  
          "contactName": "Петър Иванов",  
          "deliveryPartnerId": "7983",  
          "title": "Петър Иванов",  
          "name": "Петър Иванов",  
          "addressLine1": "Ул. Васил Левски 35",  
          "addressLine2": "string",  
          "postalCode": "15121",
```

```

    "country": "BG",
    "note": "Намира се зад зоомагазина",
    "locationId": "string"
  },
  "destination": {
    "contactNumber": "+359 123 456 7890",
    "contactEmail": "string",
    "contactName": "Petar Ivanov",
    "deliveryPartnerId": "7983",
    "title": "ПЕТЪР ИВАНОВ",
    "name": "ПЕТЪР ИВАНОВ",
    "addressLine1": " Ул. Васил Левски 2",
    "addressLine2": "string",
    "postalCode": "15121",
    "country": "BG",
    "note": "Намира се зад зоомагазина",
    "locationId": "string"
  },
  "items": [
    {
      "id": "string",
      "name": "Smartphone",
      "value": "3.45",
      "weight": 0,
      "compartmentSize": 0,
      "originDeliveryParcelId": "415-02914-308",
      "destinationDeliveryParcelId": "415-02914-308"
    }
  ]
},
"events": [
  {
    "type": "new",
    "locationDisplayName": "Test ",
    "locationId": "string",
    "postalCode": "104 37",
    "createTime": "2021-06-07T12:33:18.723Z"
  }
],
"parcelLabelUrl": "https://www.w3.org/WAI/ER/tests/xhtml/testfiles/resources/pdf/dummy.pdf",
"orderLabelUrl": "https://www.w3.org/WAI/ER/tests/xhtml/testfiles/resources/pdf/dummy.pdf",
"cancelationRequested": true,
"payment": {
  "mode": "prepaid",
  "price": {
    "amount": "string",
    "currency": "string"
  }
},
"state": "pending"
},
"createTime": "2021-06-07T12:33:18.723Z",
"updateTime": "2021-06-07T12:33:18.723Z"

```

}}}

Further responses, which might occur:

Error Code	Description
400	Bad Request. The server cannot or will not process the request due to something that is perceived to be your error (e.g., malformed request syntax, invalid request message). You are to modify the request before sending it again.
401	Not Authorized. You are either using an expired Access token to access the data or trying to initialize Auth session with invalid data.
403	Account disabled. Your account had been disabled, contact support.

## 5.0 Fetch a shipping label `/parcels/{id}/label.{type}`

Use this call to request a .pdf or .zpl file with a label you should print a stick onto each parcel.

Only this parameter is available to you:

Name	Type	Description
id*	string	Unique parcel ID. You have received parcel ID after a successful delivery request creation or you can list all parcels, see: <code>.../parcels</code> <input type="checkbox"/> Example: 1234567890  Parcel ID is always a 10-digit number.
type*	string	<i>Available values:</i> pdf, zpl (zebra printer language)
dpi	number	<i>Only applies to ZPL. Available values:</i> 200, 300 <input type="checkbox"/> Default value: 200

\*Required values

Unique parcel ID. You have received parcel ID after a successful delivery request creation or you can list all parcels, see

### GET /api/v1/parcels/{id}/label.pdf

```
curl -X 'GET' \  
'.../parcels/{id}/label.pdf' \  
-H 'accept: application/pdf'
```

### Status Code 200

.pdf file with the corresponding label.

Alternatively, to print all shipping labels at once for your order, you can replace the */parcels/{id}* part with */delivery-requests/{orderNumber}*:

See an example of a successful integration:

### GET /api/v1/delivery-requests

```
curl -X 'GET' \  
'.../delivery-requests/{orderNumber}/label.pdf' \  
-H 'accept: application/pdf'
```

### Status Code 200

.pdf file with all the corresponding shipping labels of the specific orderka.

Further responses, which might occur:

Error Code	Description
400	Bad Request. The server cannot or will not process the request due to something that is perceived to be your error (e.g., malformed request syntax, invalid request message). You are to modify the request before sending it again.
401	Not Authorized. You are either using an expired Access token to access the data or trying to initialize Auth session with invalid data.

403	Account disabled. Your account had been disabled, contact support.
-----	--

## 6.0 Destination map (Widget / Custom)

### 6.1 Widget Integration

As an alternative to integrating our API, you can embed our out-of-the-box widget into your checkout page. This widget is communicating with our API and includes the same data you can access via [GET /api/v1/destinations](#)

**Note:** The widget map is communicating only with our Production environment. For the Stage (sandbox) environment, please contact us at [integrationsupport@boxnow.bg](mailto:integrationsupport@boxnow.bg) for further support.

*How to install BOX NOW Map Widget?*

1. Paste the BOX NOW Map Widget JavaScript code into the checkout page (or any other page where you want to display the BOX NOW Map Widget).
2. Create new HTML button with class attribute boxnow-widget-button to open BOX NOW Map Widget. For example:  
`<a href="javascript:;" class="boxnow-widget-button">Open widget</a>`
3. Create new HTML button with class attribute boxnow-widget-button to open BOX NOW Map Widget. For example:

**BOX NOW Map Widget (JavaScript Code):**

```
<div id="boxnowmap"></div>

<script type="text/javascript"> var
_bn_map_widget_config = {
partnerId: 123, parentElement:
"#boxnowmap"
afterSelect: function(selected){ alert(selected.boxnowLockerPostalCode);
alert(selected.boxnowLockerAddressLine1);

alert(selected.boxnowLockerId);

}
};

(function(d){var e = d.createElement("script");e.src = "
https://widgetcdn.boxnow.bg/map-widget/client/v5.js ";e.async = true;e.defer
= true;d.getElementsByTagName("head")[0].appendChild(e);})(document);
</script>
```

**Note:** The most important is variable `_bn_map_widget_config`. With this variable you can setup all required options, as shown below.

Name	Usage	Description
parentElement	required	Please fill CSS selector for Map Widget container. For example, just create <div id="boxnowmap"></div> and fill #boxnowmap. The BOX NOW map widget will be placed inside this element.
afterSelect	required for type:iframe and type:popup	Function that is triggered when the lock is selected. Included one parameter (object) contains all information about locker (properties boxnowLockerPostalCode, boxnowLockerAddressLine1 and boxnowLockerId are the most important).
partnerId	optional	Please use your partnerId
type	optional	Use iframe, popup or navigate. Default is iframe.
gps	optional	Use it if you want to change the user's location request immediately after displaying the map. Possible options are true or false. Default is true.
autoclose	optional	Use it when you want to change what happens after you select a locker. For type:iframe, the default value is true, which means that the map will be hidden when the locker is selected. For type:popup, autoclose is always true. The possible values are true or false. The default value is true .
autoselect	optional	Selects a locker immediately after clicking on a locker on the map or in the list (not after clicking on the "select locker" button).  Selects a locker immediately after clicking on a locker on the map or in the list (not after clicking on the "select locker" button).

buttonSelector	optional	You can change the default class name to open the BOX NOW Map Widget. Default is .boxnow-mapwidget-button
zip	optional	If you have set gps=no, you can use this parameter to suggest a location on the map. The value can be a ZIP or part of a general address.

\*\* For more integration examples you can refer to: [widget-v5.boxnow.bg/developers](https://widget-v5.boxnow.bg/developers)

## 6.2 Custom Map Integration

Our widget takes advantage of Google Maps Javascript API:

<https://developers.google.com/maps/apis-by-platform>

By calling [GET /api/v1/destination](#) , you can obtain **longitude** as variable **lng** and **latitude** as variable **lat** of each delivery location, that you can then pass to the Google Maps API to display the location on the map: <https://developers.google.com/maps/documentation/javascript/adding-a-google-map>

Other useful JSON variables from the API, includes:

- **id** for locker ID;
- **image** for a url with image of the locker;
- **name** of specific APM;
- **addressLine1** и **addressLine2**;
- **postalCode**;
- **note** for a detailed description of the locker's location.

## 7.0 Appendix (API Endpoints)

Below you can find all the API endpoints/calls with regards to the complete structure of the BOX NOW Partner API:

### 7.1 Authentication

Type	Endpoint	Description
POST	.../api/v1/auth-sessions	Obtain authentication tokens.

Parameters:

**N/A**

Request body (example):

```
{
  "grant_type": "client_credentials",
  "client_id": "string",
  "client_secret": "string"
}
```

Responses:

Code	Description	Example Value
200	OK	Below □
<pre>{   "access_token": "eyJz93a...k4laUWw",   "token_type": "Bearer",   "expires_in": 3600 }</pre>		
Code	Description	Example Value
400	Bad Request. The server cannot or will not process your request due to something that is perceived to be an error (e.g., malformed request syntax, invalid request message). You are to modify the request before sending it again.	N/A
401	Not Authorized. You are either using an expired Access token to access the data or trying to initialize Auth session with invalid data.	N/A
403	Account disabled. Your account had been disabled, contact support.	N/A

## 5.2 Locations

## 7.2.1 Origins

Type	Endpoint	Description
GET	.../api/v1/origins	List available origins to pickup the order from.

Parameters:

Name	Type	Description	Example
latlng	<i>string</i>	If applied only locations in the specified radius from this gps coord are returned.	48.78081955454138, 12.446962472273063
radius	<i>number</i>	Radius in meters to return only locations within selected radius from given GPS location. Ignored if <b>latlng</b> is not present.	1000 <i>Default value: 25000</i>
requiredSize	<i>number</i>	Return only locations that can accept a package of your <b>requiredSize</b> .	1 <i>Available values:</i> 1, 2, 3
locationType	<i>array</i>	Return only locations with given types. If not present, filter is not applied.	<i>Available values:</i> any- apm, warehouse
name	<i>string</i>	Return only locations with matching name	N/A
regionLanguage Tag	<i>string</i>	Localization tag.	Example: bg

Request body (example):

**N/A**

Responses:

Code	Description	Example Value
200	OK	Below ☐

```
{
  "data": [
    {
      "id": "string",
      "type": "apm",
      "image": "https://via.placeholder.com/150",
      "lat": "48.78081955454138",
      "lng": "12.446962472273063",
      "region": "string",
      "title": "Петър Иванов",
      "name": "Петър Иванов",
      "addressLine1": "Ул. Васил Левски 1",
      "addressLine2": "string",
      "postalCode": "15121",
      "country": "BG",
      "note": "Намира се зад зоомагазина"
    }
  ]
}
```

Code	Description	Example Value
400	Bad Request. The server cannot or will not process the request due to something that is perceived to be a client error (e.g., malformed request syntax, invalid request message). You are to modify the request before sending it again.	N/A
401	Not Authorized. You are either using an expired Access token to access the data or trying to initialize Authentication with invalid data.	N/A
403	Account disabled. Your account had been disabled, contact support.	N/A

## 7.2.2 Destinations

Type	Endpoint	Описание
GET	.../api/v1/destinations	Return only locations with matching name.

Parameters:

Name	Type	Description	Example
latlng	<i>string</i>	If applied only locations in the specified radius from this gps coord are returned.	48.78081955454138, 12.446962472273063
radius	<i>number</i>	Radius in meters to return only locations within selected radius from given GPS location. Ignored if <b>latlng</b> is not present.	1000 <i>Default value:</i> 25000
requiredSize	<i>number</i>	Return only locations that can accept a package of your <b>requiredSize</b> .	1 <i>Available values:</i> 1, 2, 3
locationType	<i>array</i>	Return only locations with given types. If not present, filter is not applied.	<i>Available values:</i> any- apm, apm
name	<i>string</i>	Return only locations with matching name.	N/A
limit	<i>number</i>	Limit the number of returned results. If not defined, all results are returned.	Default value: 50
regionLanguage Tag	<i>string</i>	Localization tag.	Example: bg

Request body (example):

**N/A**

Responses:

Code	Description	Example Value
200	OK	Below □

```

{
  "data": [
    {
      "id": "string",
      "type": "apm",
      "image": "https://via.placeholder.com/150",
      "lat": "48.78081955454138",
      "lng": "12.446962472273063",
      "region": "string",
      "title": "Петър Иванов",
      "name": "Петър Иванов",
      "addressLine1": "Ул. Васил Левски 1",
      "addressLine2": "string",
      "postalCode": "15121",
      "country": "BG",
      "note": "Намира се зад зоомагазина",
      "expectedDeliveryTime": "2021-06-07T12:33:18.723Z"
    }
  ]
}

```

Code	Description	Example Value
400	Bad Request. The server cannot or will not process the request due to something that is perceived to be your error (e.g., malformed request syntax, invalid request message). You are to modify the request before sending it again.	N/A
401	Not Authorized. You are either using an expired Access token to access the data or trying to initialize Auth session with invalid data.	N/A
403	Account disabled. Your account had been disabled, contact support.	N/A

## 7.3 Delivery Requests

### 7.3.1 Complex Delivery Request

Type	Endpoint	Description
POST	.../api/v1/delivery-requests	Create a delivery request for your order.

Parameters:

N/A

Request body (example):

```
{
  "orderNumber": "<string>",
  "paymentMode": "prepaid",
  "invoiceValue": "<string>",
  "amountToBeCollected": "<string>",
  "origin": {
    "locationId": "<string>",
    "contactNumber": "+359883201231",
    "contactEmail": "<string>",
    "contactName": "<string>",
    "deliveryPartnerId": "<string>",
    "title": "<string>",
    "name": "<string>",
    "addressLine1": "<string>",
    "addressLine2": "<string>",
    "postalCode": "<string>",
    "country": "<string>",
    "note": "<string>"
  },
  "destination": {
    "contactEmail": "<string>",
    "contactName": "<string>",
    "contactNumber": "+359883201231",
    "locationId": "<string>",
    "deliveryPartnerId": "<string>",
    "title": "<string>",
    "name": "<string>",
    "addressLine1": "<string>",
    "addressLine2": "<string>",
    "postalCode": "<string>",
    "country": "<string>",
    "note": "<string>"
  },
  "items": [
    {
      "value": "<string>",
      "id": "<string>",
      "name": "<string>",
      "weight": "<number>",
      "compartmentSize": "<number>",
      "originDeliveryParcelId": "<string>",
      "destinationDeliveryParcelId": "<string>"
    }
  ],
  "overwriteSenderShippingLabelInfo": {
    "row1": "<string>", "row2": "<string>", "row3": "<string>",
    "row4": "<string>"
  },
  "typeOfService": "same-day",
  "description": "<string>",
  "allowReturn": false,
  "showRecipientInformation": <boolean>,
  "notifyOnAccepted": "<string>",
  "notifySMSOnAccepted": "<string>",
}
```

```

"additionalInformation": "<string>",
"returnLocation": {
  "addressLine1": "<string>",
  "postalCode": "<string>",
  "country": "<string>",
  "title": "<string>",
  "name": "<string>",
  "addressLine2": "<string>",
  "note": "<string>"
}
}

```

Responses:

Code	Description	Example Value
200	OK	Below ☐
<pre> {   "id": "string",   "parcels": [     {       "id": "string"     }   ] } </pre>		
Code	Description	Example Value
400	Bad Request. The server cannot or will not process the request due to something that is perceived to be your error (e.g., malformed request syntax, invalid request message). You are to modify the request before sending it again.	N/A
401	Not Authorized. You are either using an expired Access token to access the data or trying to initialize Auth session with invalid data.	N/A
403	Account disabled. Your account had been disabled, contact support.	N/A

### 7.3.2 CSV Delivery Request

Type	Endpoint	Description
POST	.../api/v1/delivery-requests:fromCsv	Create a delivery request from CSV.

Parameters:

- **type** <string> **\*Required**
- **file** <string> (\$binary) **\*Required**
- **allowReturn** true - **showRecipientInformation** <boolean> - **delimiter** ,

Request body (example):

```
curl --location 'TBA/api/v1/delivery-requests:fromCsv' \
--header 'X-PartnerID: <string>' \
--header 'Content-Type: multipart/form-data' \
--header 'Accept: application/json' \
--form 'type="from-warehouse"' \
--form 'file="<string>"' \
--form 'allowReturn="true"' \
--form 'showRecipientInformation="<boolean>"' \
--form 'delimiter=","'
```

#### CSV Example (Delivery from a warehouse):

from\_location,destination\_location,customer\_phone\_number,customer\_email,customer\_full\_name,number\_of\_parcel(default 1),payment\_mode(cod, prepaid - default),amount\_to\_be\_collected(default 0.00),price\_currency(default EUR) 1,2,+30 21 4 655 1234,someone@example.com,Yiannis Papadopoulos,3,cod,24.00,EUR

#### CSV Example (Delivery from AnyAPM):

destination\_location,parcel\_size,customer\_phone\_number,customer\_email,customer\_full\_name,number\_of\_parcel(default 1),payment\_mode(cod, prepaid - default),amount\_to\_be\_collected(default 0.00),price\_currency(default EUR) 2,1,+30 21 4 655 1234,someone@example.com,Yiannis Papadopoulos,3,cod,24.00,EUR Responses:

Code	Description	Example Value
200	OK	Below ☐

```
[
  {
    "id": "string",
    "destination": {
      "contactName": "Petar Ivanov"
    },
    "parcels": [
      {
        "id": "string", "labelUrl":
"https://www.w3.org/WAI/ER/tests/xhtml/testfiles/resources/pdf/dummy.pdf"
      }
    ]
  }
]
```

Code	Description	Example Value
400	Bad Request. The server cannot or will not process the request due to something that is perceived to be your error (e.g., malformed request syntax, invalid request message). You are to modify the request before sending it again.	N/A
403	Account disabled. Your account had been disabled, contact support.	N/A

### 7.3.3 Return Delivery Request

Type	Endpoint	Description
POST	.../api/v1/delivery-requests:customerReturns	Create a request delivery of parcel that customer would like to return.

Parameters:

**N/A**

Request body (example):

```
{
  "sender": {
    "contactPhoneNumber": "+359 12 3 456 7890",
    "contactEmail": "string",
    "contactName": "Petar Ivanov"
  },
  "destination": {
    "locationId": "string"
  },
}
```

```

"parcels": [
  {
    "id": "string",
    "name": "Smartphone",
    "value": "3.45",
    "weight": 9.99,
    "size": 0
  }
]
}

```

Responses:

Code	Description	Example Value
200	OK	Below ☐

```

{
  "id": "string",
  "orderNumber": "12309284",
  "labels": [
    {
      "type": "pdf",
      "mimetype": "application/pdf",
      "url": "https://www.w3.org/WAI/ER/tests/xhtml/testfiles/resources/pdf/dummy.pdf"
    }
  ],
  "parcels": [
    {
      "id": "string",
      "labels": [
        {
          "type": "pdf",
          "mimetype": "application/pdf",
          "url": "https://www.w3.org/WAI/ER/tests/xhtml/testfiles/resources/pdf/dummy.pdf"
        }
      ]
    }
  ]
}
]
}

```

Code	Description	Example Value
400	Bad Request. The server cannot or will not process the request due to something that is perceived to be your error (e.g., malformed request syntax, invalid request message). You are to modify the request before sending it again.	N/A

401	Not Authorized. You are either using an expired Access token to access the data or trying to initialize Auth session with invalid data.	N/A
403	Account disabled. Your account had been disabled, contact support.	N/A

### 7.3.4A Address Delivery Request

Type	Endpoint	Description
POST	.../api/v1/delivery-requests:checkAddressDelivery	Check if address for delivery is available. (NOT that accurate Google API)

Parameters:

N/A

Request body (example):

```
{
  "address": "48 Cherni Vrah, Sofia, Bulgaria",
  "radius": 500,
  "compartmentSize": 0
}
```

Responses:

Code	Description	Example Value
200	OK	Below <input type="checkbox"/>

```
{
  "id": "string",
  "type": "apm",
  "image": "https://via.placeholder.com/150",
  "lat": "48.78081955454138",
  "lng": "12.446962472273063",
  "region": "string",
  "title": "ImeNaAvtomata",
  "name": "ImeNaAvtomata",
  "addressLine1": "Ул. Васил Левски 1",
  "addressLine2": "string",
  "postalCode": "15121",
  "country": "BG",
  "note": "Намира се зад зоомагазина",
  "expectedDeliveryTime": "2021-06-07T12:33:18.723Z", "distance":
  123 }
}
```

Code	Description	Example Value
400	Bad Request. The server cannot or will not process the request due to something that is perceived to be your error (e.g., malformed request syntax, invalid request message). You are to modify the request before sending it again.	N/A
402	Location error. No location can be found for the request	N/A
503	Service Unavailable.	N/A

### 7.3.4B Address Delivery Request

Type	Endpoint	Description
POST	.../api/v2/delivery-requests:checkAddressDelivery	Check if address for delivery is available. ( more accurate ArcGIS API )

Parameters:

**N/A**

Request body (example):

```
{
  "city": "Sofia",
  "street": "48 Cherni Vrah",
  "postalCode": "15121",
  "radius": 500,
  "compartmentSize": 0
}
```

Responses:

Code	Description	Example Value
200	OK	Below □
<pre>{   "id": "string",   "type": "apm",   "image": "https://via.placeholder.com/150",   "lat": "48.78081955454138",   "lng": "12.446962472273063",   "region": "string",   "title": "ИмеНаАвтомата",   "name": "ИмеНаАвтомата",   "addressLine1": "Ул. Васил Левски 1",   "addressLine2": "string",   "postalCode": "15121",   "country": "BG",   "note": "Намира се зад зоомагазина",   "expectedDeliveryTime": "2021-06-07T12:33:18.723Z", "distance": 123 }</pre>		
Code	Description	Example Value
400	Bad Request. The server cannot or will not process the request due to something that is perceived to be your error (e.g., malformed request syntax, invalid request message header). You are to modify the request before sending it again.	N/A
402	Location error. No location can be found for the request	N/A
503	Service Unavailable.	N/A

### 7.3.5 Update Delivery Request

Type	Endpoint	Description
PUT	.../api/v1/delivery-requests:orderNumber	Update a created delivery request.

Parameters:

Name	Type	Description	Example
orderNumber*	string	Unique order number in Your system. The same you use to create the delivery request.	N/A

**\*Required value**

You can only update the “allowReturn” variable.

Request body (example):

```
{
  "allowReturn": true
}
```

Responses:

Code	Description	Example Value
200	OK	Below ☐

```
{
  "id": "string"
}
```

Code	Description	Example Value
400	Bad Request. The server cannot or will not process the request due to something that is perceived to be your error (e.g., malformed request syntax, invalid request message). You are to modify the request before sending it again.	N/A
402	Location error. No location can be found for the request	N/A

404	Resource not found. You are authorized but the requested resource does not exist. Make sure the requested URL is correct.	N/A
-----	---	-----

## 7.4 Labels

### 7.4.1 Single Shipping Label

Type	Endpoint	Description
GET	... /api/v1/parcels/:id/label.{type}	Get printable label for parcel.

Parameters:

Name	Type	Description	Example
Id*	string	Unique parcel ID. You have received parcel ID after a successful delivery request creation or you can list all parcels, see /parcels.	Unique 10-digit parcel ID. Example: 1234567890
type*	string	The output format of the file you want your shipping label.	Available values: .pdf, .zpl
dpi	number	Only applies to .zpl (Zebra Printing Language). Available values: 200 or 300.	Available values: 200, 300 Default value: 200
width	number	Width of the shipping label in mm. Only applies to .zpl (Zebra Printing Language).	N/A
printerModel	string	Only applies to .zpl (Zebra Printing Language).	N/A

\***Required value** Request body  
(example):

N/A

Responses:

Code	Description	Example Value
200	OK	Below <input type="checkbox"/>

```
{
  "data": {
    "partnerName": "TestStoreBG",
    "parcel": {
      "displayName": "2270192741",
      "weight": "0.00 kg"
    },
    "sender": {
      "type": "eshop",
      "shippingLabelInfo": "Test\n\n",
      "rawInfo": "Test\nTest"
    },
    "recipient": {
      "name": "BOX NOW Test",
      "email": "partner@example.com",
      "phoneNumber": "+359 123 456 7890",
      "rawInfo": "BOX NOW Test\n+359883201231\npartner@example.com",
      "type": "eshop"
    },
    "delivery": {
      "type": "apm-delivery",
      "street": "Непозната 1",
      "city": "София",
      "zip": "1000",
      "destinationPublicId": "dmwh",
      "lastStopOrder": 6
    }
  }
}
```

```
},  
  
"depotId": "SOF",  
  
"laneId": "testBGSOF1",  
  
"createTime": "пн 21.08.23 г. 09:21 ч.",  
  
"orderNumber": "3066878059",
```

```
"payment": {  
  
  "type": "prepaid",  
  
  "parcelCount": 1  
  
}  
  
}
```

Code	Description	Example Value
401	Not Authorized. You are either using an expired Access token to access the data or trying to initialize Auth session with invalid data.	N/A
403	Account disabled. Your account had been disabled, contact support.	N/A
404	Resource not found. You are authorized but the requested resource does not exist. Make sure the requested URL is correct.	N/A

## 7.4.2 Multiple Shipping Labels

Type	Endpoint	Description
GET	... /api/v1/delivery-requests/{orderNumber}/label.{type}	Get shipping labels for all parcels in a delivery request.

Parameters:

Name	Type	Description	Example
orderNumber*	string	Unique parcel ID. You have received parcel ID after a successful delivery request creation or you can list all parcels, see /parcels.	N/A
type*	string	The output format of the file you want your shipping label.	Available values: .pdf, .zpl
dpi	number	Only applies to .zpl (Zebra Printing Language). Available values: 200 or 300.	Available values: 200, 300 Default value: 200
width	number	Width of the shipping label in mm. Only applies to .zpl (Zebra Printing Language).	N/A
printerModel	string	Only applies to .zpl (Zebra Printing Language).	N/A

**\*Required value**

Request body (example):

**N/A** Responses:

Code	Description	Example Value
200	OK	Below <input type="checkbox"/>
string		

Code	Description	Example Value
401	Not Authorized. You are either using an expired Access token to access the data or trying to initialize Auth session with invalid data.	N/A
403	Account disabled. Your account had been disabled, contact support.	N/A
404	Resource not found. You are authorized but the requested resource does not exist. Make sure the requested URL is correct.	N/A

### 7.4.3 Search for a shipping label by specified criteria

Type	Endpoint	Description
POST	... api/v1/labels:search	Search for a shipping label by specified criteria.

#### Request (example):

```
{
  "parcelIds": [
    "<string>",
    "<string>"
  ],
  "orderNumbers": [
    "<string>",
    "<string>"
  ],
  "paperSize": "A6",
  "perPage": 1
}
```

## 7.5 Parcels

### 7.5.1 Confirm AnyAPM Parcel Delivery

Type	Endpoint	Description
POST	.../api/v1/parcels/{id}:confirm-anyapm-delivery	Confirm parcel has been delivered to AnyAPM.

Parameters:

Name	Type	Description	Example
id*	string	Unique parcel ID. You have received parcel ID after a successful delivery request creation or you can list all parcels, see /parcels	Unique 10-digit parcel ID. Example: 1234567890

\* **Required value**

Request body (example):

N/A

Responses:

Code	Description	Example Value
200	OK	N/A
400	Bad Request. The server cannot or will not process the request due to something that is perceived to be your error (e.g., malformed request syntax, invalid request message). You are to modify the request before sending it again.	N/A
401	Not Authorized. You are either using an expired Access token to access the data or trying to initialize Auth session with invalid data.	N/A
403	Account disabled. Your account had been disabled, contact support.	N/A
404	Resource not found. You are authorized but the requested resource does not exist. Make sure the requested URL is correct.	N/A
503	Service Unavailable.	N/A

### 7.5.2 Cancel Parcel

Type	Endpoint	Description
POST	.../api/v1/parcels/{id}:cancel	Cancel parcel delivery.

Note: Cancelling a cancelled parcel has no effect.

Parameters:

Name	Type	Description	Example
id*	string	Unique parcel ID. You have received parcel ID after a successful delivery request creation or you can list all parcels, see /parcels	Unique 10-digit parcel ID. Example: 1234567890

\* Required value

Request body (example):

**N/A**

Responses:

Code	Description	Example Value
200	OK	N/A
401	Not Authorized. You are either using an expired Access token to access the data or trying to initialize Auth session with invalid data.	N/A
403	Account disabled. Your account had been disabled, contact support.	N/A
404	Resource not found. You are authorized but the requested resource does not exist. Make sure the requested URL is correct.	N/A

### 7.5.3 Cancel Parcel from delivery partner

Type	Endpoint	Description
POST	.../api/v1/parcels/{id}:declareDeliveryPartnerReturn	Similar to `parcels/{id}:cancel`, but designed to work for cases when a delivery partner is going to be returning a parcel for any reason, e.g. cancellation, standard return.

Note: Cancelling a cancelled parcel has no effect.

Parameters:

Name	Type	Description	Example
id*	string	Unique parcel ID. You have received parcel ID after a successful delivery request creation or you can list all parcels, see /parcels	Unique 10-digit parcel ID. Example: 1234567890

\* **Required value**

Request body (example):

**N/A**

Responses:

Code	Description	Example Value
200	OK	N/A
401	Not Authorized. You are either using an expired Access token to access the data or trying to initialize Auth session with invalid data.	N/A
403	Account disabled. Your account had been disabled, contact support.	N/A
404	Resource not found. You are authorized but the requested resource does not exist. Make sure the requested URL is correct.	N/A

#### 7.5.4 Create an URL link for uploading of custom labels.

Type	Endpoint	Description
POST	...api/v1/parcels/{id}/destinationlabel:generateUploadUrl	Create an URL link for uploading of custom labels.

Note: Cancelling a cancelled parcel has no effect.

Parameters:

Name	Type	Description	Example
id*	string	Unique parcel ID. You have received parcel ID after a successful delivery request creation or you can list all parcels, see /parcels	Unique 10-digit parcel ID. Example: 1234567890

\* **Required value**

Request body (example):

**N/A**

Responses:

Code	Description	Example Value
200	OK	N/A
401	Not Authorized. You are either using an expired Access token to access the data or trying to initialize Auth session with invalid data.	N/A
403	Account disabled. Your account had been disabled, contact support.	N/A
404	Resource not found. You are authorized but the requested resource does not exist. Make sure the requested URL is correct.	N/A

## 7.5.5 Webhook

Type	Endpoint	Description
POST	.../:your-webhook-endpoint	Used to send you parcel events messages.

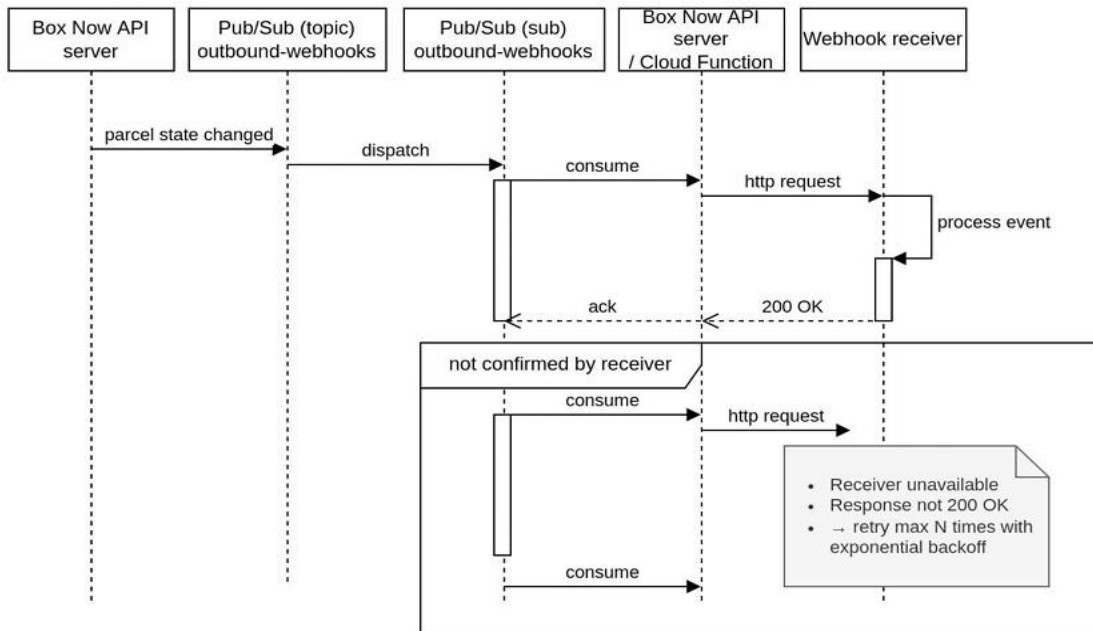
Request body (example):

```
{
  {
    "specversion": "<string>",
    "type": "<string>",
    "source": "<string>",
    "subject": "<string>",
    "id": "<string>",
    "time": "<dateTime>",
    "datacontenttype": "<string>",
    "datasignature": "<string>",
    "data": {
      "parcelId": "<string>",
      "parcelName": "<string>",
      "parcelState": "lost",
      "parcelReferenceNumber": "<string>",
      "orderNumber": "<string>",
      "event": "missing",
      "time": "<dateTime>",
      "parcelPin": "<string>",
      "eventLocation": {
        "displayName": "<string>",
        "postalCode": "<string>"
      },
      "additionalInformation": "<string>",
      "customer": {
        "name": "<string>",
        "email": "<string>",
        "phone": "+359883201231"
      }
    }
  }
}
```

- time – time of webhook dispatch
- data.time – time of when the parcel event created
- In case of multiple close updates, the client must use `data.time` to discard invalid updates

eShop needs to provide BOX NOW with an URL address and port to send events to.

# Integration to BoxNow API server



Communication is webhook based where BOX NOW is acting as publisher and eShop-partner as subscriber.

## 7.6 List of Entrusted Partners

Type	Endpoint	Description
GET	... api/v1/entrusted-partners	List of partner you can manage.

Responses:

Code	Description	Example Value
200	OK	Below □

```
[
{
  "id": "<string>",
  "displayName": "<string>",
  "assignedCurrency": "<string>",
  "customerReturnsMaxAllowedSize": "<number>",
  "region": "<string>",
  "permission": {
    "depotAsOrigin": "<boolean>",
    "warehouseAsOrigin": "<boolean>",
    "anyApmAsOrigin": "<boolean>",
    "anyApmToSameApmDelivery": "<boolean>",
    "anyApmToSameApmDeliveryWithoutConfirmation": "<boolean>",
    "customForm": "<boolean>",
    "codPayment": "<boolean>",
    "canCustomerCreateCustomerReturns": "<boolean>",
    "canPartnerCreateCustomerReturns": "<boolean>",
    "addressAsDestination": "<boolean>",
    "codAddressAsDestination": "<boolean>"
  }
}
]
```

Code	Description	Example Value
403	Account disabled. Your account had been disabled, contact support.	N/A